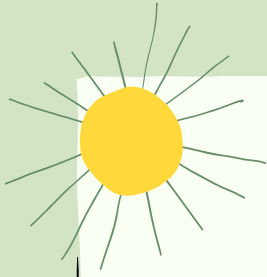


PANDEMIC PLANT PROJECT



A CARE PACKAGE CREATED FOR STUDENTS IN QUARANTINE



BACKGROUND

The purpose of the pandemic plant was to improve the quarantine experience at CSU. Since students have to remain inside for a long period, my project aimed to connect them with the environment even while they were confined to their rooms. COVID-19 can be a burden physically but also mentally, and after some research, I discovered that growing plants can help alleviate some of this mental burden.

PROGRESS

Since CSU already created a care package for students in quarantine, I worked with the people involved in the care package process to make my idea a reality. I, along with the care package team, modified the current quarantine package so that my part could be added. I then presented my idea to the RHA board and received enough funding for 50 plants. With this funding, each student received a packet of basil seeds, a mason jar with soil, and a step-by-step pamphlet explaining how to care for their plant.

DATA

Also included in the pamphlet was a QR code for students. After scanning the code, they could leave feedback on how the plant had improved their experience. Although I did not receive many replies, it was clear that students enjoyed growing a plant and found that it improved their quarantine experience.

FUTURE IMPACT

Implementing this project in the future might look a little different since quarantine will hopefully not be needed. A possibility could be converting this into a regular care package that any student could receive.

RECOGNITION

This project would not have been possible without the help of others. The RHA board played an important role by funding my project. Teresa Metzger and Christie Mathews guided me through this process and were vital to the care packages being distributed.